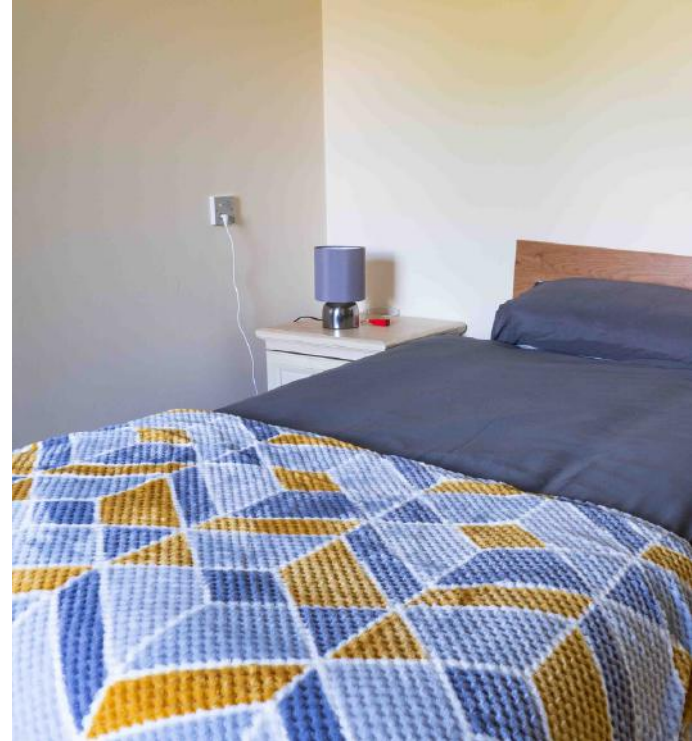


Welcome to Swillbrook House



Table of Contents

About Swillbrook House	3
History of the home	4
Our Care	5
Facilities	6
Rooms	7
Activities	7
Meals	8
Visit Us	8
Fees	8
Staff	8
Map & Directions	9
Complaints	10
Contact Details	11



About Swillbrook House

Swillbrook House is a converted 17th Century former private residence set in tranquil grounds located in Bartle Village near Preston. The home is surrounded by 3 acres with a newly landscaped garden and driveway.

The grounds are covered with an abundance of flowering trees and shrubs providing a pleasant setting all year round. There are uninterrupted views across the countryside and Lancaster canal

History of the home

Swillbrook House was converted to its current use 25 years ago. The original part of the house dates some 400 years ago and was used as a private residence. However, its uses have changed over the years including being a school house and living quarters for monks some years ago.

In more recent years an underground tunnel was unearthed connecting Swillbrook House to a local historic building, suggesting historical importance. There is much more to the history of Swillbrook House which we are continually researching.



The New Home

Swillbrook House changed ownership in December 2015 to become a close family run business. The home entered a new era being sympathetically restored to its former grand state.

Every effort has been taken to retain many of the period features such as the wooden panelled quiet lounge, grand entrance reception and the grounds.

We have a continual programme of development and improvement much of which is guided by the residents' feedback.



Our Care

Swillbrook House provides residential care for a variety of needs in a unique, friendly and warm environment.

Quality of care is our highest priority. Every resident has their own requirements and capabilities and we tailor individual care plans accordingly. This ensures each residents care plan promotes health and independence in the most suitable way.

Although there is an outlined daily routine all residents are free to adjust this to their preference. We feel this is important to allow residents freedom within the home.

Residents may wish to retain their own GP, alternatively there are a number of local GP's who visit the home on a regular or on an as required basis.

Family are welcome anytime and there is an open house policy. Children are always encouraged to visit and allowances are made for family pets. Under certain circumstances residents have been allowed to bring their pets with them to the home.

Facilities

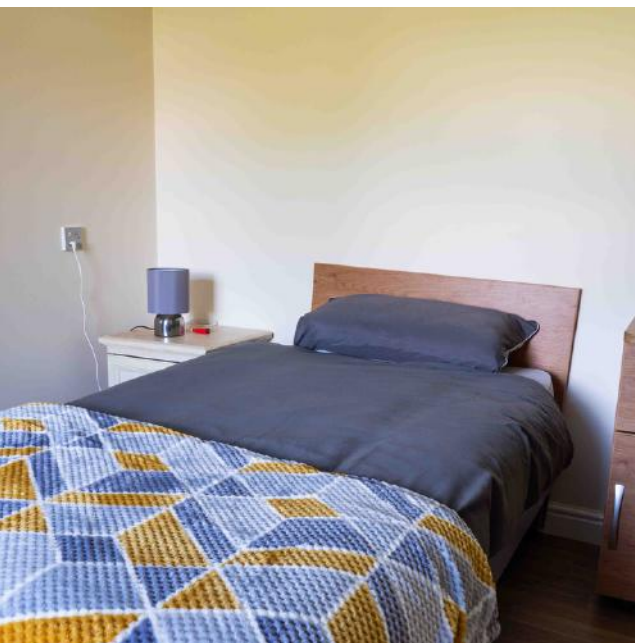
Swillbrook House has a variety of rooms for the residents to use. There is a Aga lounge where residents can enjoy light music, a quiet board game or an area to read. For residents who enjoy a quiet moment the quiet lounge has been designed to provide a relaxing ambience. There is also a large TV lounge for residents to enjoy.

Our newly renovated luxury assisted bathroom ensures a pleasurable experience rather than bathing being a chore. There is a large patio garden to enjoy afternoon tea during the summer months. The tranquillity of the Swillbrook attracts wildlife such as squirrels, rabbits and much bird life. Many of the residents spend hours watching and feeding the wildlife.



Rooms

The home provides accommodation on the ground and first floor in 17 single and 3 double rooms, with the majority having en-suite facilities. Many of the rooms have been completely refurbished to the very highest standards exceeding the National Minimum Standards. All rooms have stunning views and many residents have chosen rooms accordingly.



Activities

There is a wide range of stimulating recreational, cultural and social activities available throughout the year.

We ensure there are activities to suit the capabilities of all residents. For some of the more able residents there is the freedom to enjoy gardening within the grounds among the many flower beds and vegetable patches.

For both fitness and relaxation many residents enjoy the Tai Chi classes on offer. Other activities include keep fit sessions, bowling, parties and group talks.

Meals

The home takes pride in the catering services on offer. Our full time cook ensures a nutritional and varied traditional menu, using the freshest ingredients including many local produces. Individual dietary requirements are catered for and a daily choice is available. We try to make birthdays a special day and cater to the residents request for which there is no charge.

Spend a day with us

Moving into residential care and choosing a home is a difficult decision. Here at Swillbrook House we offer the opportunity to visit the home to satisfy yourselves that the environment and atmosphere is to your preference. If you wish a subsidise day stay at the home is also available by prior arrangement.

Fees

We welcome both private and local authority funded residents and our fees are the same.

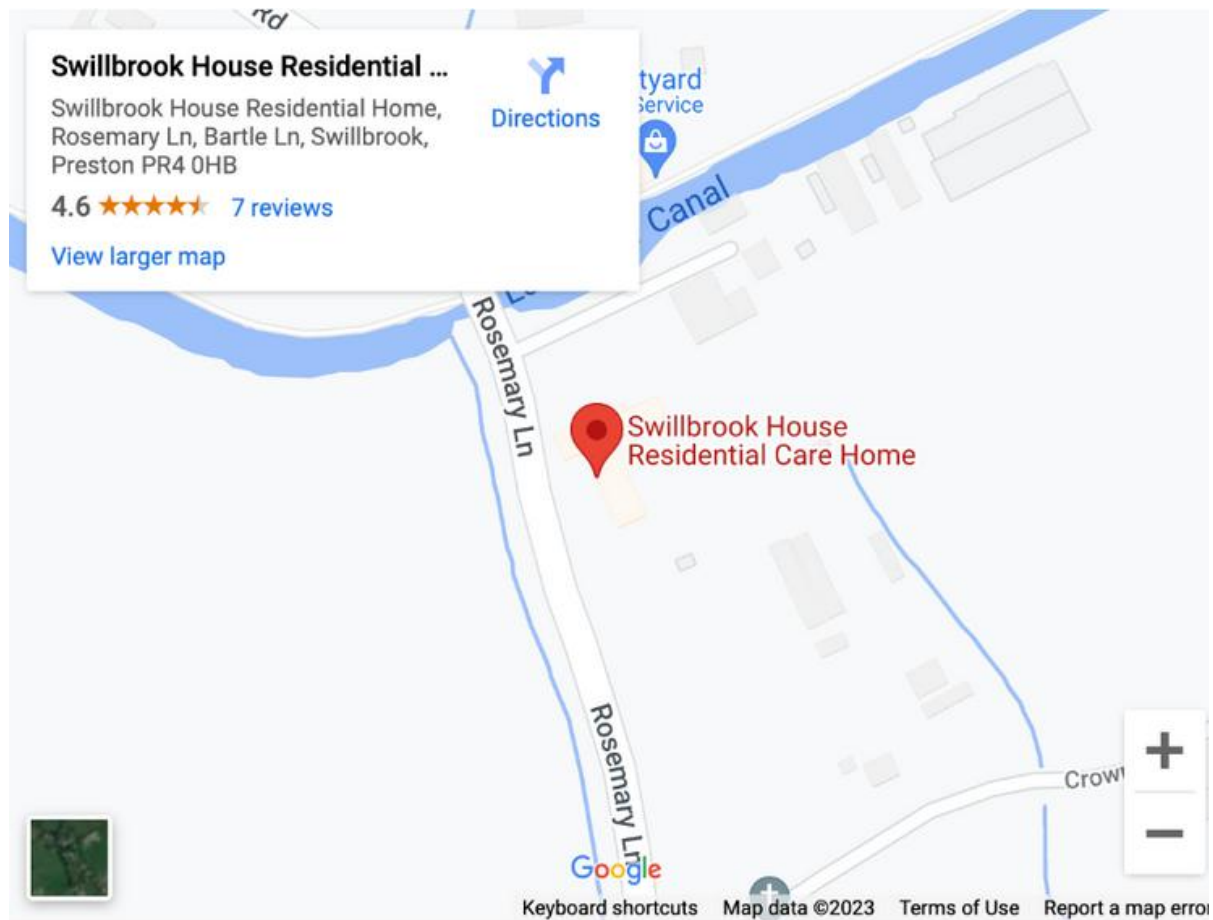
Staff

The staff at Swillbrook are experienced in all aspects of care. We feel it is of paramount importance that our staff are of a caring, sensitive and warm nature and are carefully selected on these qualities. Staff undergo continual assessment and training to ensure the highest standards are maintained.

Map & Directions

Out of Preston, take the Blackpool Road northwards 1 mile past the Chrysler Garage, turn right at the traffic lights into Lea Road towards Bartle & Catforth.

Swillbrook House is approximately 3 miles on the right just before the bridge over the Lancaster Canal.



How to find us

We are located in Bartle Viliage adjacent to Lancaster Canal, a 3 minute drive from Blackpool Road and 4 minutes from Garstang Road.



Complaints

Complaints would normally be dealt with by the Home Manager and if this is not dealt with to your satisfaction it would then be referred to the home director or you can contact either:

Care Quality Commission

Website: www.cqc.org.uk

Tel: 03000 616161

Lancashire County Council

Social care

Tel: 0300 123 6720

Safeguarding adults

Tel: 0300 123 6721

Confidentiality

You may rest assured that any request by you for confidentiality will be strictly adhered to at all levels, except in circumstances where to do so may be detrimental or dangerous to yourself or to another.

Contact Details

Swillbrook House Residential Care Home

Rosemary Lane, Bartle, Preston PR4 0HB

Tel: 01772 690317

Email: info@swillbrookhouse.com

Website: www.swillbrookhouse.com



Swillbrook House
RESIDENTIAL CARE HOME

